



## USER MANUAL

S-MIX500  
S-Mixcontrol



## Safety Reminder

To protect the device and operating personnel from electrostatic discharge, you need to check and ensure that the device is grounding well before the device is powered on. Please observe the following when you install, use, maintain this equipment.



Make sure the device ground connection.

### Disposal Instruction (US)

For better protection of our earth, please don't throw this electronic device into municipal trash bin when discarding.

To minimize pollution and ensure utmost protection of the global environment, please recycle the product. For more

information about the collection and recycling of Waste Electrical and Electronic Equipment (WEEE), please contact your local dealers.

### Safety Instructions

1. Please read these safety instructions carefully.
2. Please keep this User Manual for later reference.
3. Please disconnect this equipment from connector before cleaning. Don't use liquid or sprayed detergent for cleaning. Use moisture sheet or cloth for cleaning.
4. Make sure the equipment is connected to the power source with the correct voltage, frequency, and ampere.
5. All cautions and warnings on the equipment should be noted.
6. Never pour any liquid into opening, this could cause fire or electrical shock.
7. Never open the equipment. For safety reason, the equipment should only be opened by qualified service personnel.
8. If one of the following situations arises, get the equipment checked by a service personnel :
  - a. Liquid has penetrated into the equipment.
  - b. The equipment has been exposed to moisture.
  - c. The equipment has not work well or you can not get it work according to user's manual.
  - d. The equipment has dropped and damaged.
  - e. If the equipment has obvious sign of breakage.
9. Ambient operation temperature: 0 ~ 45 degrees.
10. Risk of overheating! Don't put operating/installing equipment inside too closed space, be sure the installation space at least 1 to 2 inches or 2 to 5 cm of space for ventilation. To ensure that other objects do not cover the equipment.

### Notice: Peripheral devices

Only peripherals (input/output devices, terminals, player, etc.) certified to comply with Class B limits may be attached to this equipment. Operation with non-certified peripherals is likely to result in interference to radio and TV reception.

### Caution

Changes or modifications not expressly approved by the manufacturer could void the user's authority, which is granted by the Federal Communications Commission, to operate this equipment.

# Contents

Preface .....	3
1, Software Structure.....	4
2, Customer Software .....	4
2.1 Login Page .....	4
2.2 Main Page .....	5
2.3 Tool Bar .....	6
2.4 Detail Function.....	8
2.4.1 Splice setting .....	8
2.4.2 Upload files.....	8
2.4.3 Add Subtitles .....	10
2.4.4 Image Polling .....	10
2.4.5 Video Polling.....	11
2.4.6 Add camera .....	12
3, Play windows .....	13
4, Playing Tool .....	13

## Preface

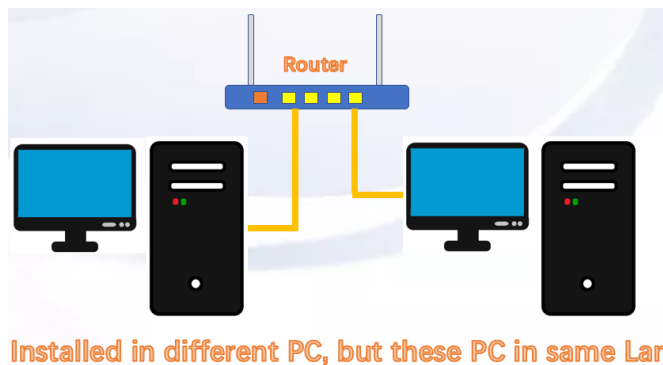
Welcome to using our software, and this software is suit for Commercial shown. And we are happy to be helpful for your business.

To let you use this software as soon as possible, at first there are some tips words for help;

**Server PC:** The PC which installed the software of “S-Mixcontrol” server;

**Customer PC:** The PC which installed the software of “S-Mixcontrol” customer;

**This software used must in Lan,** if server software and Customer software installed in different PC, like picture below, so these PC must be in same Lan;



Or installing this software on same one PC is also supported;

# 1, Software Structure

The software is divided into two parts:

Server software:



Customer software:



To using this software, open the “S-Mixcontrol” server on the PC at first, after it opened, it will go to on the right part of taskbar.

And then open the customer software.

## 2, Customer Software

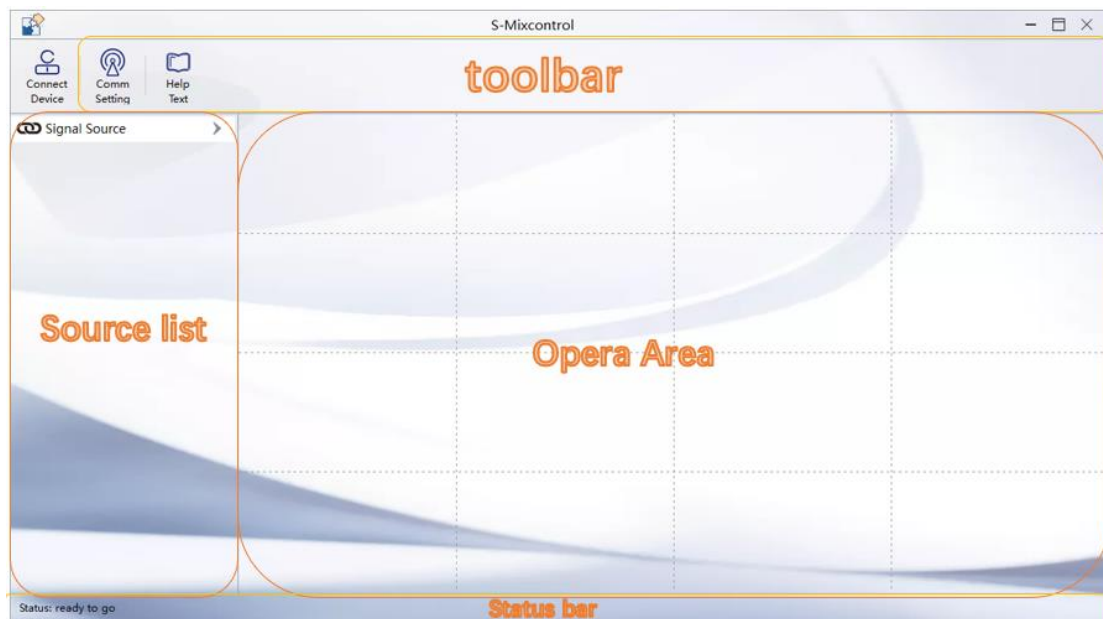
### 2.1 Login Page

User: Admin

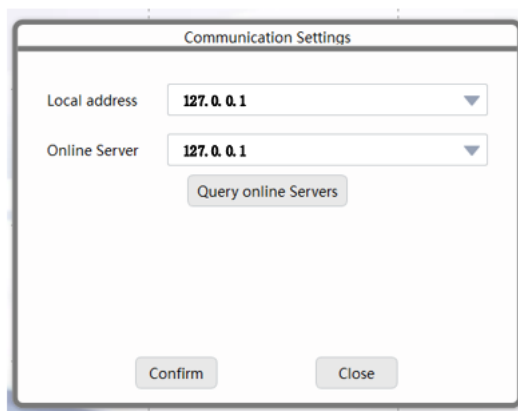
Pass:123321

You can select the “Rememb”, and not need to input password when open this software again;

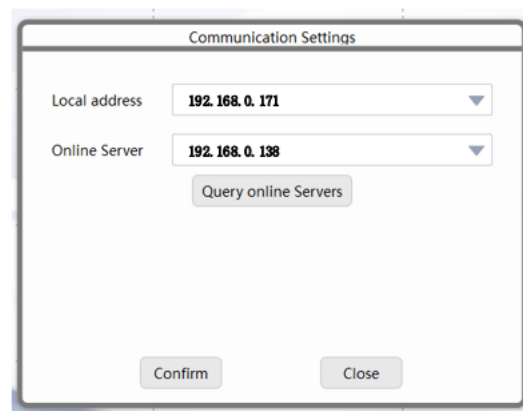
## 2.2 Main Page



First click “Comm Setting” button, get into Communication settings menu, for connecting to server software.



Two software On same PC



Two software On different PC

**A**, Select the Local address, make sure that server software

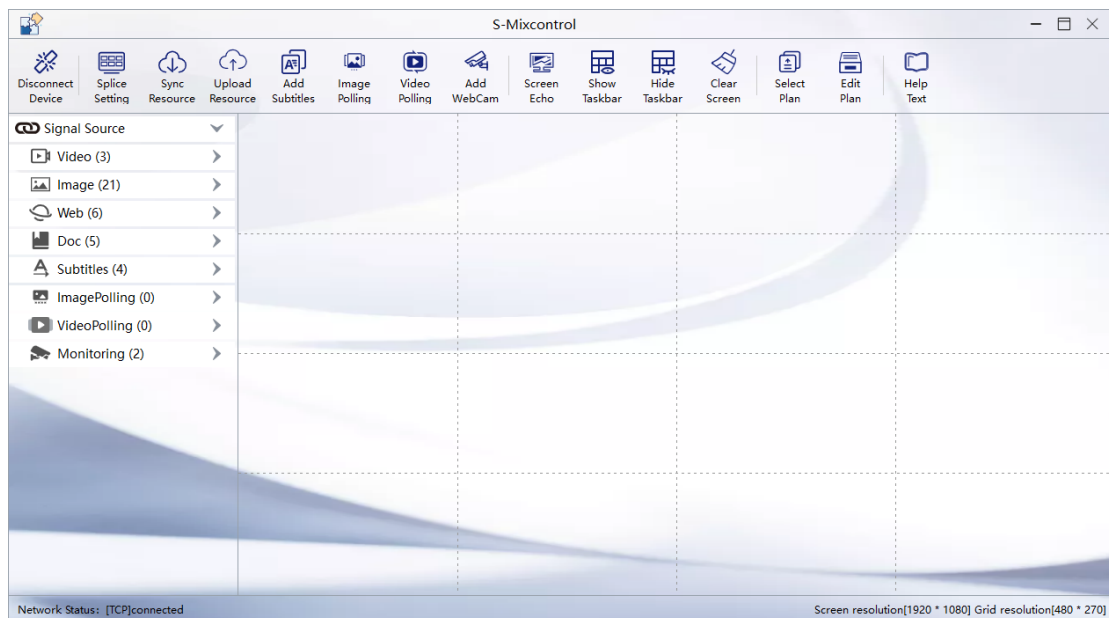
and customer software under the same router.

**B**, When server and customer opened on same PC, you can choice “127.0.0.1”, but when in same LAN, you must select the IP , such as “192.168.1.XXX” or “XXX.XXX.XXX.XXX”.

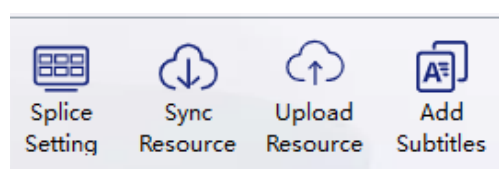
**C**, click “**Query online Servers**” to search server software.

If customer software is available, the Online server will show the IP of server software. If not, please make sure server software is opening, and the server’s PC is available in Lan.

If the “**Online Server**” is available, click “**Confirm**”, and the click “**Connect Device**”, to connect the server software.



## 2.3 Tool Bar

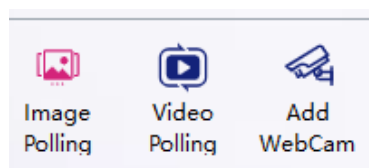


**Splice Setting:** setting grid and resolution;

**Sync Resource:** Sync sources list from server;

**Upload Resources:** upload resources to server;

**Add Subtitles:** add subtitles to server for showing;



**Image Polling:** Setting Image cycle displaying;

**Video Polling:** Setting Video cycle displaying;

**Add Monitor:** Add a camera in Lan to show on desktop;

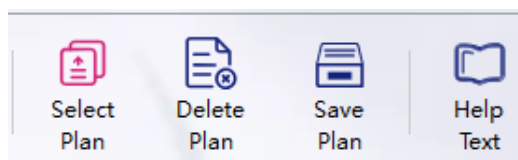


**Screen Echo:** Show the server desktop image;

**Show Taskbar:** Show taskbar on server PC;

**Hide Taskbar:** Hide the taskbar on server PC;

**Clear Screen:** Close all the playing windows on server PC;



**Select Plan:** To play windows which you setting before;

**Delete Plan:** Delete the plan which you do not need;

**Save Plan:** To save playing windows when you want to play in



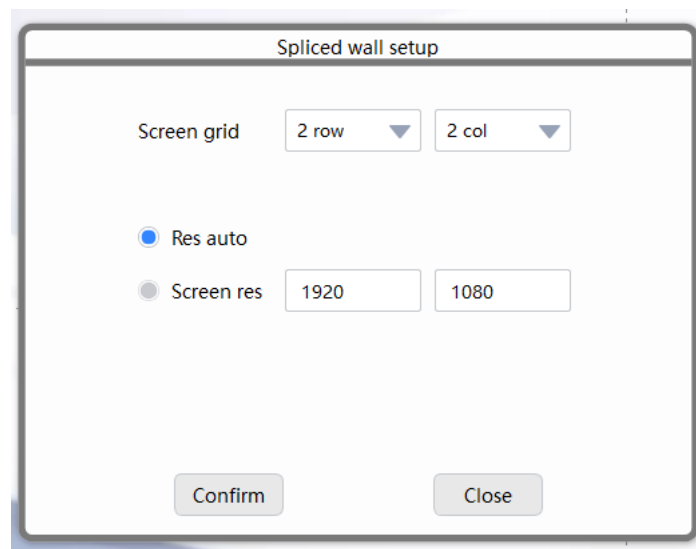
next time;

**Help Text:** To get help file and change languages;

## 2.4 Detail Function

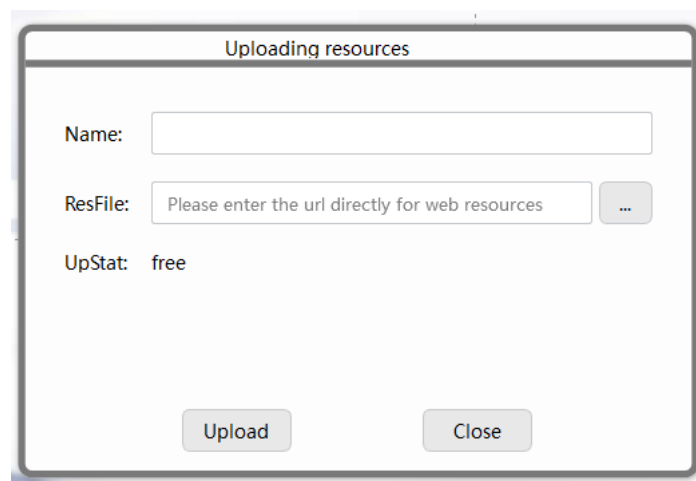
### 2.4.1 Splice setting

Open “Splice Setting”, then setting desktop as grid.

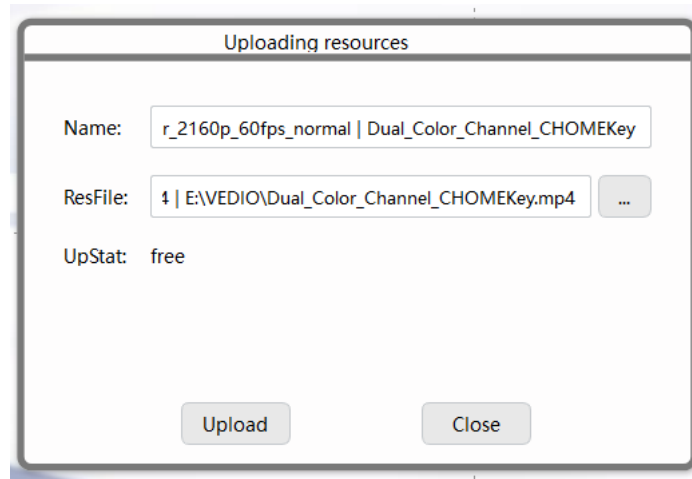


### 2.4.2 Upload files

Click “Upload Resource”, to open upload page.

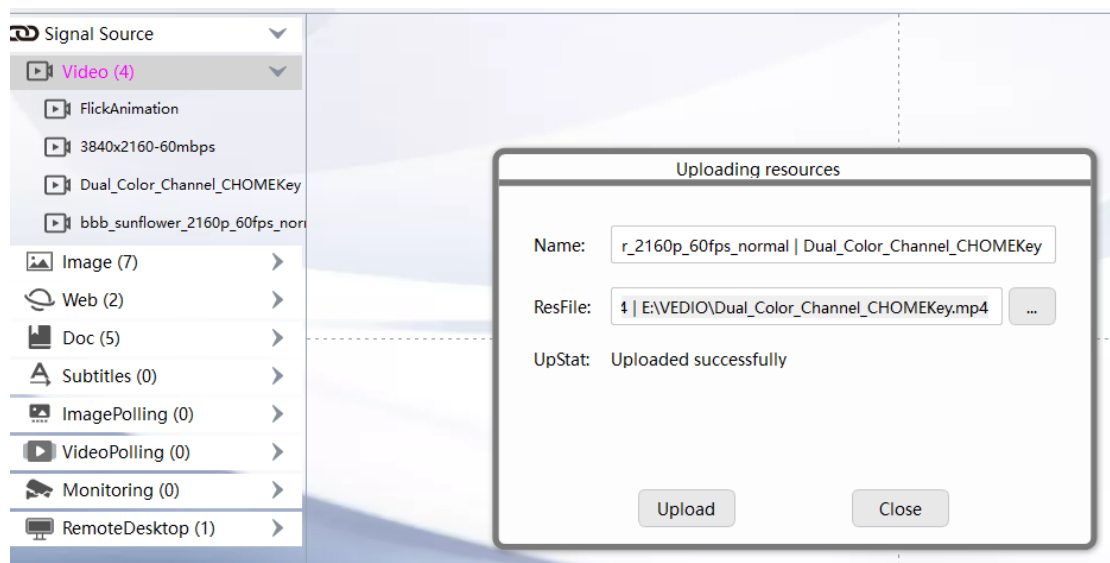


If upload the files which type is movie \picture\ ppt\ word\ excel\pdf to server, you should click “...” to select those files.



Add: you can select some files once to upload.

Then click “Upload” button, to upload files to server.



When uploaded successfully, these files will show on source list.

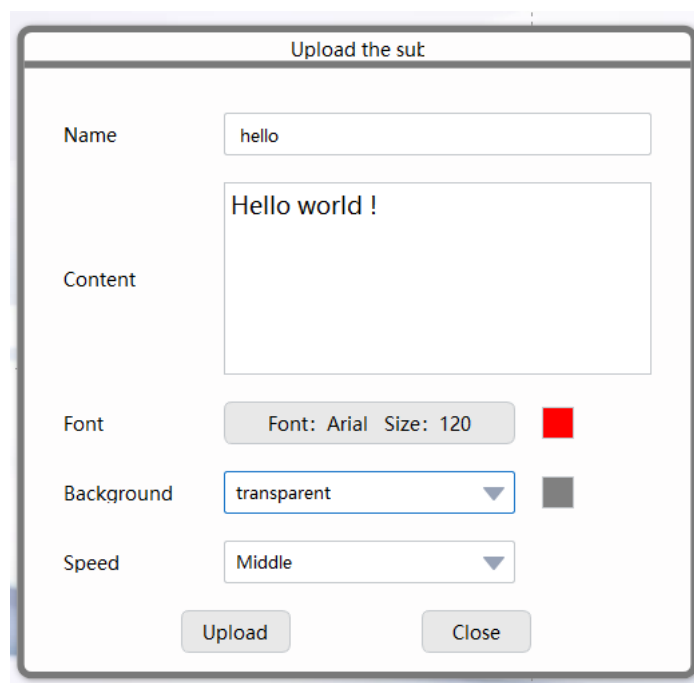
Attention: 1, if it is a web link, you can paste full link on “ResFile”, and rename the “Name”, then uploading it, if success, these links will show on Web which in Signal Source.

2, if word, excel, ppt show fail, please make sure the

“MicrosoftEdgeWebView2RuntimeInstallerX64.exe” is installed, or you maybe change it to pdf, and then upload this pdf to server.

### 2.4.3 Add Subtitles

Open add subtitles page, in this page, you can setting the words what you want to show on desktop.



Upload the sut

Name

Content 

Hello world !

Font 

Font: Arial Size: 120

■

Background 

transparent ▼

■

Speed 

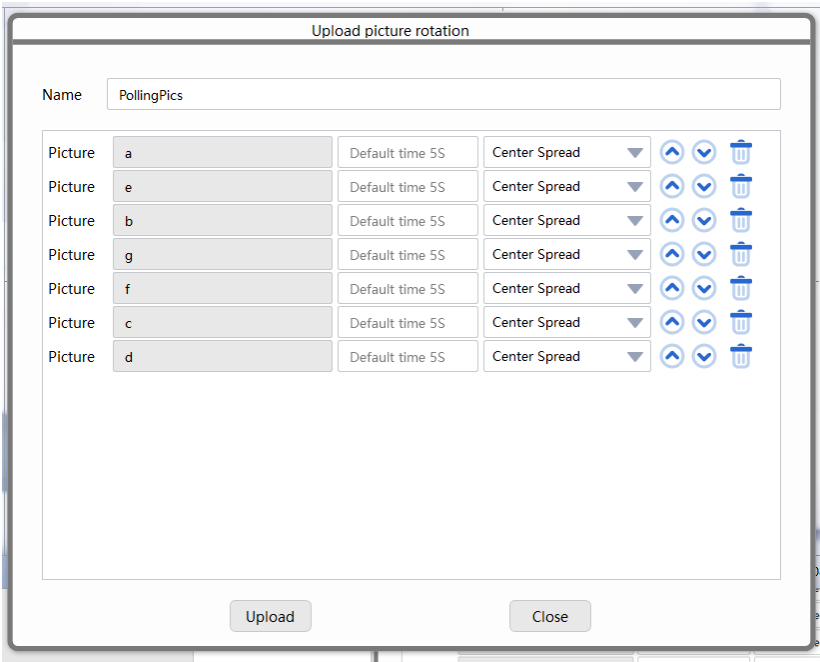
Middle ▼

Upload

Close

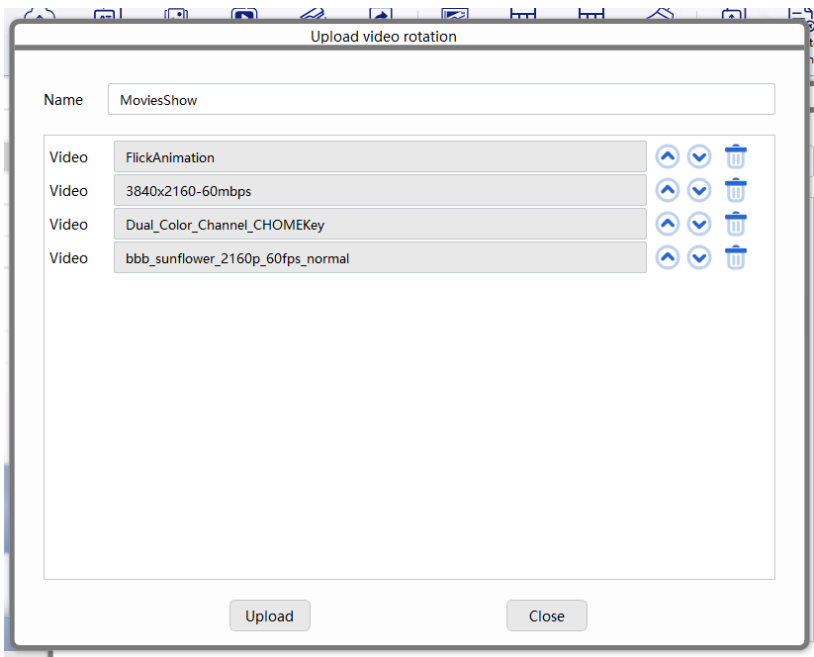
### 2.4.4 Image Polling

Set picture cycle displaying, in this setting page, you can set the time the picture show time, and the action when it showing, and sequence of showing. While these sources came from image list.



2.4.5 Video Polling

Set video cycle displaying, in this setting page, you can set the sequence of showing or delete the one you do not need. While these sources came from Video list.



## 2.4.6 Add camera

It's suit for a Web Camera in Lan, no suit for in different Lan or WLAN.

When opening this setting page, if cameras in Lan support ONVIF, the "Camera" will show the cameras list, if not, please manually add the "Name" and "URL";

While we only help for HIK or Dahua equipment in Lan, when the camera list is available, the select the "Type", "manufacturer", add user and password for the equipment, then click "Generate URL", it will add a RTSP link in "URL";

Please attention the "URL" is a RTSP link, while please refer to the instructions of the equipment.

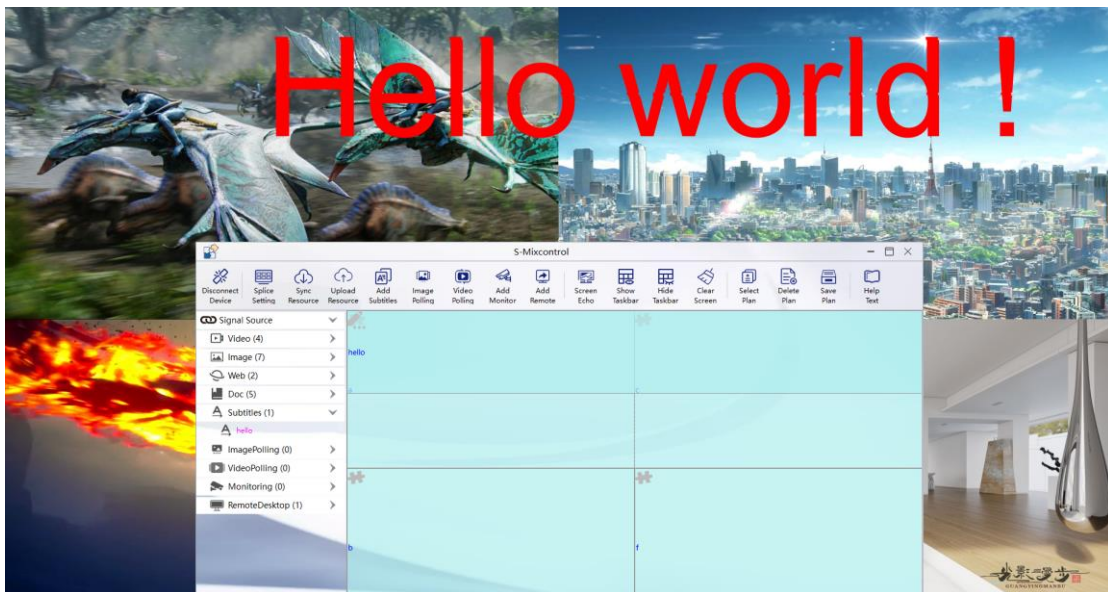
Screen resolution[1920 \* 1080] Gi

### 3, Play windows

When Resource is OK, then you can drag the source in play list to operate area;

Place it on position you want, and resize it by dragging or right mouse menu;

As picture below(server and customer software on same one PC):



### 4, Playing Tool

There are some useful functions on right mouse menu;

**Close:** Only close this playing window;

**Raise:** Setting this playing window topper than others windows;

**Lower:** Setting this playing window bottomer

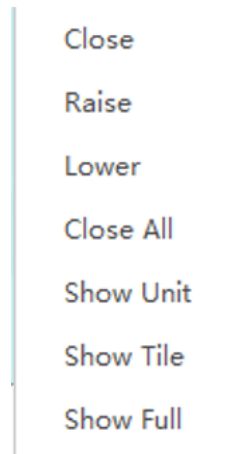
than others windows;

**Close All:** Close all the playing Windows;

**Show Unit:** Resize this playing window into single grid;

**Show Tile:** Fill the grid occupied by the window;

**Show Full:** Set playing windows Showing full desktop on PC;



(Below functions are only showing on video window)

**Mute All:** make all playing windows mute;

**Mute:** Make single windows mute;

**Unmute:** make single windows un-mute;

**Play:** setting video playing;

**Pause:** Setting Video pause;

**FFx2:** Fast forward for video playing;

**FBx2:** Fast back for video playing;

**Restore:** Video play normally;



Below functions only for Doc and Web window

**Zoom-:** Scaler down content;

**Zoom+:** Scaler upper content;

