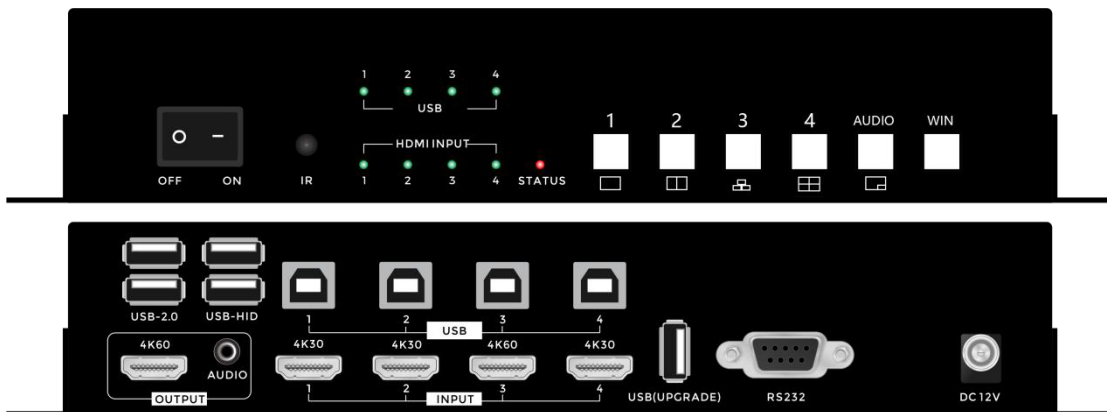


4K HDMI multiviewer with KVM and USB2.0, RS232 & IR remote control

VPX401KVM



Features

- ▼ Supports multiple working modes
- ▼ Support up to 4K inputs and 4K60 output
- ▼ Supports front panel push-button, hot-key and IR and RS-232 control
- ▼ Supports the audio switching
- ▼ Supports the 3.5mm audio de-embedded
- ▼ Supports the mouse roaming

This is a high-performance 4K60 4X1 HDMI Multi-Viewer with fast switching switcher, which can display 4 channels of ultra-high-definition video signals on the same screen at the same time. Users can choose different screen splitting methods and switch between 4 channels of input signals. It supports 4K60/ 4K30/ 1080P/720P output and 3.5mm audio de-embedded, the input resolutions can up to 4K(three 4K30 inputs and one 4K60 input), when the 4 input signals are 1080p60 or below can truly realize the point-to-point lossless display. This multi-viewer also supports audio switching, which can switch the sound of any input signals. It can supports multiple control methods, users can control the device through the front push-button,IR remote or the professional RS232. In general, it is a very practical 4K60 multi-viewer with stable performance, simple installation, flexible control, which can be widely used in games, professional conferences, radio and television, security monitoring, securities markets and other fields .

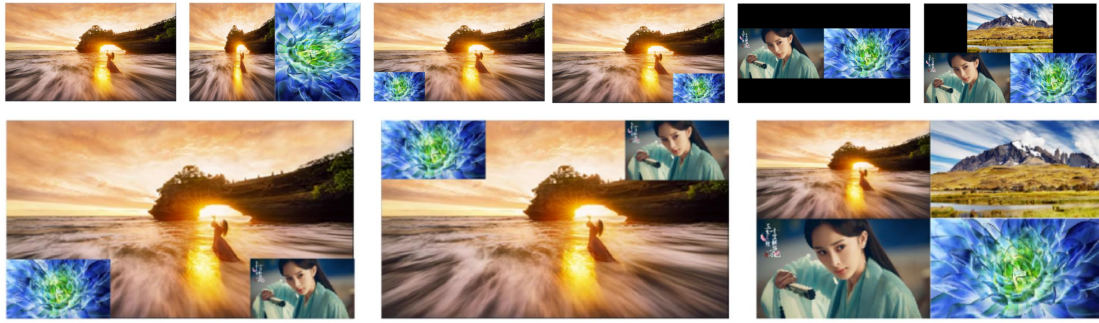
Specification

NAME	VPX-42100KVM
Input	1 x HDMI2.0(4K60); 3 x HDMI1.4(4K30)
Input resolution	<p>HDMI2.0: 640x480⁸, 800x600⁸, 1024x768⁸, 1280x768⁸, 1280x800⁸, 1280x1024⁸, 1360x768⁸, 1366x768⁸, 1440x900⁸, 1400x1050⁸, 1600x1200⁸, 1680x1050⁸, 1920x1200⁸, 720x480⁸ (480p), 720x576⁶ (576p), 1280x720⁵ (720p30),1280x720⁶ (720p50), 1280x720⁸ (720p60), 1920x1080² (1080p24), 1920x1080³ (1080p25), 1920x1080⁵ (1080p30), 1920x1080⁶ (1080p50), 1920x1080⁸ (1080p60), 3840x2160⁵(2160p30), 3840x2160⁶ (2160p50), 3840x2160⁸ (2160p60)</p> <p>HDMI1.4: 640x480⁸, 800x600⁸, 1024x768⁸, 1280x768⁸, 1280x800⁸, 1280x1024⁸, 1360x768⁸, 1366x768⁸, 1440x900⁸, 1400x1050⁸, 1600x1200⁸, 1680x1050⁸, 1920x1200⁸, 720x480⁸ (480p), 720x576⁶ (576p), 1280x720⁵ (720p30), 1280x720⁶ (720p50), 280x720⁸ (720p60), 1920x1080² (1080p24), 1920x1080³ (1080p25), 1920x1080⁵ (1080p30), 1920x1080⁶ (1080p50), 1920x1080⁸ (1080p60), 3840x2160⁵(2160p30) 1 = 23.98 Hz, 2 = 24 Hz, 3 = 25 Hz, 4 = 29.97 Hz, 5 = 30 Hz, 6 = 50 Hz, 7 = 59.94 Hz, 8 = 60 Hz, 9 = 75 Hz</p>
Output	1 x HDMI2.0
Output resolution	<p>HDMI2.0: 1920x1080⁶ (1080p50), 1920x1080⁸ (1080p60), 3840x2160⁵ (2160p30) , 3840x2160⁶ (2160p50) , 3840x2160⁸ (2160p60)</p> <p>1 = 23.98 Hz, 2 = 24 Hz, 3 = 25 Hz, 4 = 29.97 Hz, 5 = 30 Hz, 6 = 50 Hz, 7 = 59.94 Hz, 8 = 60 Hz, 9 = 75 Hz</p>
Storage Temperature	-25°C to 55°C
Input	4 x HDMI
Input audio signal	RAW PCM, 16 bit, 32/44.1/48KHz sps; PCM 2.0
Output	1 x HDMI2.0;1 x Analog Audio
Output audio signal	RAW PCM, 16 bit, 32/44.1/48KHz sps; PCM 2.0

Control method	
Front panel button	MODE : Select display mode WIN1 : Switch/select the inputs for Window 1 WIN2 : Switch/select the inputs for Window 2 WIN3 : Switch/select the inputs for Window 3 WIN4 : Switch/select the inputs for Window 4(*Long press for 5 seconds to switch different output resolutions) AUDIO : Select the corresponding input signal(*Long press for 7 seconds to reset to factory model)
IR	Can realize all the functions of the button, also support fast switching
RS232	The interface is a 3pin phoenix segment, which support third-party control
General parameters	
Operating temperature	0 to +45°C (32 to + 113 °F)
Storage temperature	-20 to +70°C (-4 to + 158 °F)
Relative humidity	10% to 90%
Static Protection	Human body discharge mode:±8kV (Air gap discharge)/ ±4kV (Contact discharge)
Power supply	12 V 1.5 A DC
Power consumption	10W(Max)
Input audio signal	RAW PCM, 16 bit, 32/44.1/48KHz sps; PCM 2.0
Measure	223X27X97(mm)
Net weight	0.8kg

Hot-key combination	Functions
Ctrl +Ctrl +1	Switch to input 1
Ctrl +Ctrl +2	Switch to input 2
Ctrl +Ctrl +3	Switch to input 3
Ctrl +Ctrl +4	Switch to input 4
Ctrl +Ctrl +F1	Switch to single-window working mode with mouse roaming
Ctrl +Ctrl +F2	Switch to dual-window working mode with mouse roaming
Ctrl +Ctrl +F3	Switch to three-window working mode with mouse roaming
Ctrl +Ctrl +F4	Switch to quad-view working mode with mouse roaming
Ctrl +Ctrl +F5	720p60
Ctrl +Ctrl +F6	1080p60
Ctrl +Ctrl +F7	1920*1200
Ctrl +Ctrl +F8	2560*1600
Ctrl +Ctrl +F9	4K30
Ctrl +Ctrl +F10	4K60
Ctrl +Ctrl +F11	Mouse roaming
Ctrl +Ctrl +F12	Mouse stop roaming
* +O(Letter O)	mouse roaming in any directions
*+S(Letter S)	mouse roaming in “Z” path
CTRL+CTRL+A+ 1	Audio from input 1
CTRL+CTRL+A+ 2	Audio from input 2
CTRL+CTRL+A+ 3	Audio from input 3
CTRL+CTRL+A+ 4	Audio from input 4

Working Modes



Ports & Components

