

Driger 55" 4K UHD Freestanding Digital Signage with Capacitive Touch Screen

GA55FHD02TC

Timing switch function, Split screen, Full HD 1080P screen



Features

▼ Tempered Glass Protection

The screen uses 4mm of fully tempered, high-explosion-proof glass to ensure the safety of freestanding digital signage.

▼ Intelligent Display

It supports splitting the screen into multiple windows with different content being reproduced in each of them

▼ Built-in Timer

The eco-friendly timer allows to assign daily or weekly on and off times for your screen

▼ 500 nits IPS Panel

Achieving ultimate lifelike colour from an ultra-wide viewing angle in portrait orientation. It can be upgraded to 700 nits.

▼ 24/7 Commercial Grade

Designed for use in commercial applications, this screen can run 24/7. All connectors have been locked to avoid tampering.

▼ Castor Wheels

Designed with wheels for easy moving around, once the kiosk is in position, the wheels can be locked.

▼ Cloud Bases CMS Upgrade

The player could be upgraded to network CMS to manage the player at any time in any place with the internet.

▼ 4K Display Upgrade

It could be upgraded to a 4K resolution display.

High Definition Display



High efficiency and energy saving. Full HD 1080P LCD screen with bright colors.

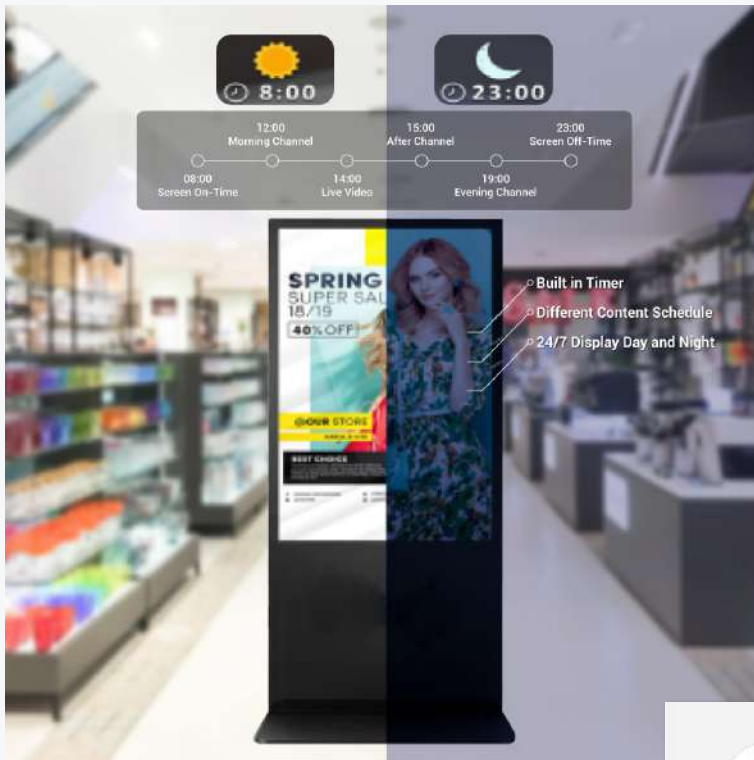


Tempered Glass Protection

The screen uses 4mm of fully tempered, high-explosion-proof glass to ensure the safety of freestanding digital signage.

24/7 Commercial Grade

Designed for use in commercial applications this screen can run 24/7. Eco-friendly timer allows to assign daily or weekly on and off times for your screen.



Attention-Grabbing Brand Showcase

Stand out with a customized logo and be heard with built-in speakers. Durable castor wheels offers mobility to adjust for optimal visibility.



Ultra-wide Angle



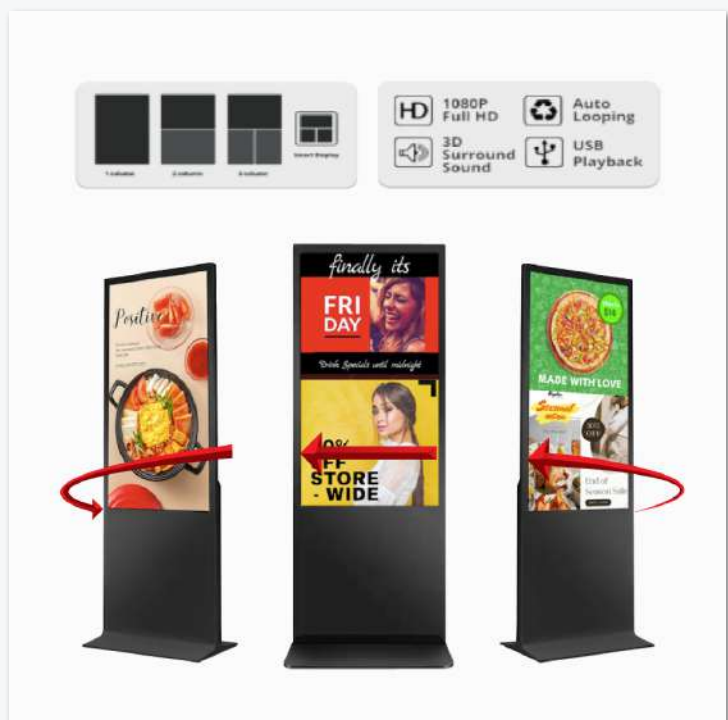
Achieving ultimate lifelike colour from an ultra-wide viewing angle in portrait orientation. It can be upgraded to 700 nits.



Cloud Based CMS

Player can be upgraded with a Cloud CMS to allow intuitive and convenient content management anytime, anywhere with internet access.

** CMS needs to be purchased separately.*



CMS Flexibility

Fully utilize the screen square footage by dividing the screen to highlight various contents and manage playlist scheduling.

** CMS needs to be purchased separately.*

Specification

Display Type	LED LCD
Body Material	Tempered glass + metal (back case)
Dimensions (mm)	1914.70 x 748.20
Speakers	8 Ω 5W \times 2
Protective Panel	Tempered glass
Security Lock	Anti-theft lock
Power Consumption	Built-in power supply (<220W)
Input Voltage	100-220V
Controller	Infrared remote control
Touch Technology	Capacitive touch
Media Playback/ Storage	USB
Interfaces	USB, network, HDMI, speaker ports

LCD Screen

Feature	Details
Size	55 inches
Aspect Ratio	16:9
Display Area (mm)	1209.6 (H) \times 680.4 (V)
Pixel Pitch (mm)	0.105 \times 0.315
Resolution	1920 \times 1080
Brightness	450 cd/m ²
Contrast Ratio	5000:1 (typical)
Surface Treatment	Matte
Viewing Angle	178° (typical, CR \geq 10)
Response Time	12 ms
Frame Rate	60 Hz
Lifespan	Over 50,000 hours
Operating Temperature	-30°C to 80°C

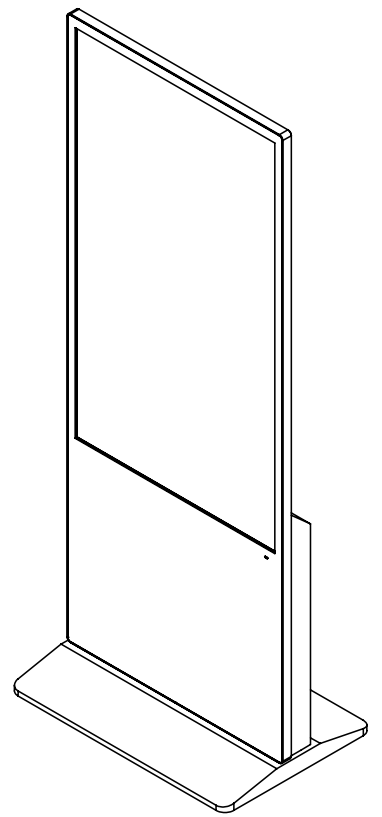
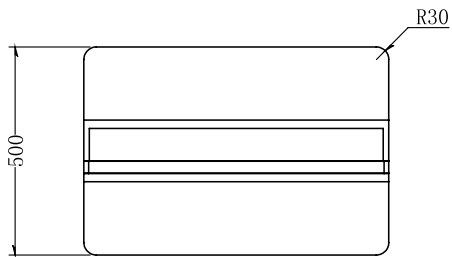
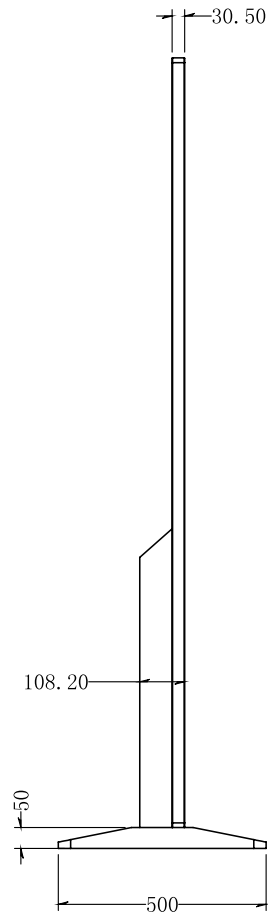
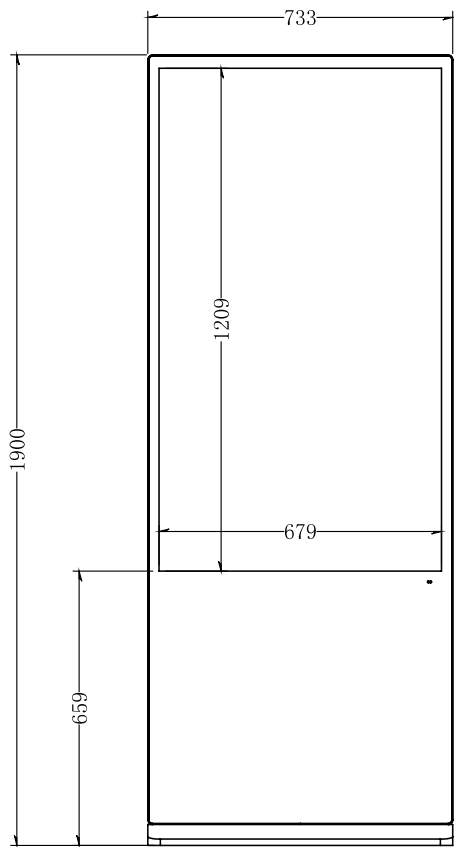
Motherboard Specification

Feature	Details
CPU	Allwinner A40I, Cortex-A7 architecture, 1.5 GHz
RAM	DDR3, 1 GB
Built-in Storage	EMMC Flash, 16 GB (expandable to 32 GB)
Storage Expansion	Supports TF cards up to 32 GB
Wi-Fi	Built-in Wi-Fi or Wi-Fi+Bluetooth module
Operating System	Android 7.1
Language Support	Multiple (English, Chinese, French, etc.)
Browser	UCWeb, Google, and more
Media Format Support	AVI, MP4, MP3, JPG, PNG, etc.
Max Resolution Support	3840 × 2160

Accessories and Packaging

Item	Details
Packaging	Carton box with foam padding
Dimensions (mm)	1968 x 860 x 160
Accessories	Power cord, keys, user manual, remote control, wall-mount kit

Dimension



Ports & Components

